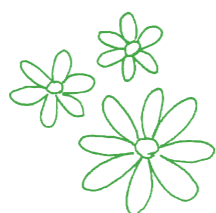
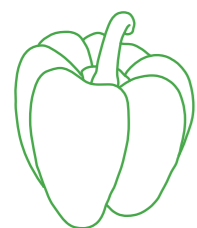


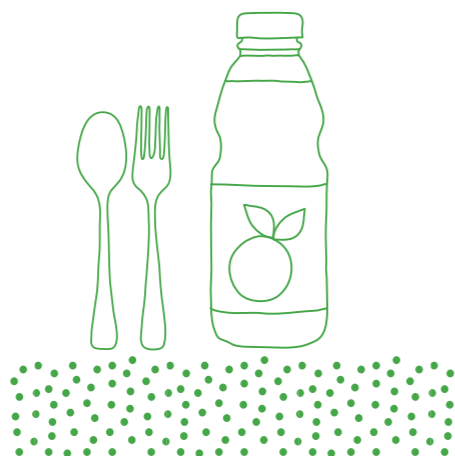
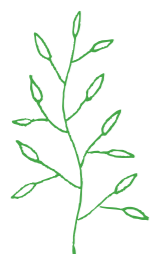
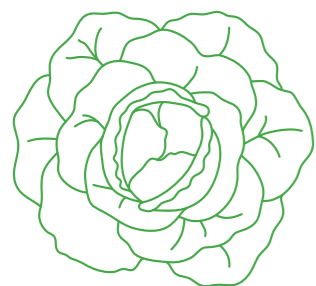


Group profile

Feel. Grow. Connect.



Gratitude for life, Cultivating life.



Feel, grown and connect agriculture to the future

Inochio Group has supported the agriculture industry for more than 100 years, providing pest control, green-house construction, and farming support.

Our group has two principles. The first is based on the words of founder Rihei Ishiguro: Our lives are for the help of others and society. The second is demonstrating gratitude for the benefits of agriculture and giving back.

The most beautiful part of farming is feeling the joy of growing and connecting one life to another. Forgetting this feeling leads to the perception that farming is inefficient and unrewarding labor. Farming brings bounty and joy to everyday life, and it is a wonderful industry that revitalizes the community.

As globalization progresses, new technologies change the agricultural scene. On the other hand, aging societies and lack of successors plague the future of farming.

Amid these new changes, our four business units cover a wide range of areas, from production to distribution, thus enabling comprehensive support to the industry.

We will take upon us each obstacle farming provides, and with each improvement, cultivate the future of agriculture.

CEO of Inochio Holdings Inc.

Isao Ishiguro



Feel. Grow. Connect.



Our name, our promise. Inochio.

Since our establishment in 1909, we have always thought of agriculture as the job that supports and sustains life. Our objective and work policy is based on the concept of "gratitude for life and cultivating life"

The world and agriculture are rapidly changing, and each member of our staff has the mission of observing and growing life, connecting it to the future.

Therefore we chose the name "Inochio" (meaning LIFE in Japanese) as a promise to society, to our customers, and to ourselves.



Field of Life. The history behind our logo.

Our logo was designed with the concept of the "beauty of farming" and the "bright future of the next generation of agriculture" The green rectangle represents the workplace or stage in which our employees provide value to our customers. The people-shaped i's represent our staff and customers. We want to grow and flourish in the same "field" as our customers.

We Feel. The importance of life through agriculture.

Agriculture was created to sustain human life. In other words, it is the origin of civilization, and the first industry. It's a labor vital to supporting human life. The field is our workplace. We keep our eyes straight into the labor of life, agriculture.



We Grow. A new generation of farmers, and the future of agriculture.

"Our lives must be used for the service of others and the world." These wise words from our founder helps each of us grow. We support each other in our growth. That's how we work. Facing the challenges of agriculture, we improve ourselves along with our motivated farmers, cultivating agriculture into a joyful industry.

We Connect. The joy of agriculture to the community, and the future.

Farming is an important labor providing vitality to people and the community. Agricultural products provide abundance and pleasure to the everyday's life. Our role is to be grateful for agriculture's bounty while building a strong connection to the future.

Feel, grow, and connect life to the future. That's our work at Inochio Group.

From all the employees at Inochio

Inochio Group's Business Areas, Structure, and The Future of Our Organization

Inochio Group is comprised of four business units (BU) and a holding company. Each BU specializes in a specific field, with the combined force helping farmers in powerful ways.

The main pillars are the vertical axis representing the core business supporting the customers, and the horizontal axis representing the flow from production to consumer.

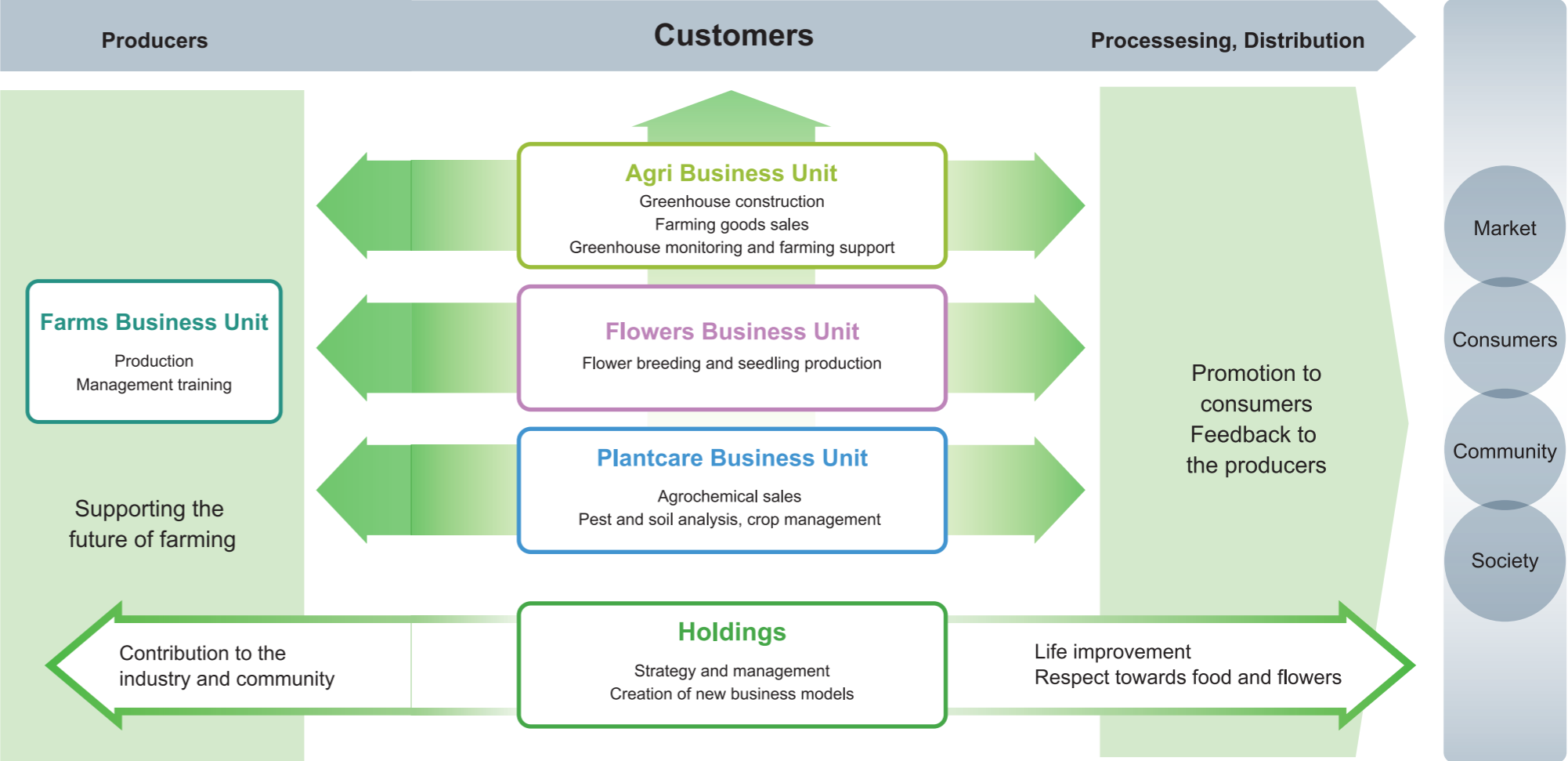
The three BUs in the vertical axis (Agri, Plantcare, and Flowers) have expanded their business to provide customers with great value. On the horizontal axis, the Farm BU cultivates new technologies and staff that support the future of farming, providing the market and consumers with the joys of agriculture.

Strengthening cultivation techniques, R&D and marketing is a vital task for the whole group. This organizational structure helps us achieve this goal effectively and

efficiently. Inochio has the functions to support the evolution of farming and the diversification into processing and distribution.

Finally, the holding company devises strategies and manages the BU goals. It is vital to maintaining the synergy between each BU. Our goal is the creation of a new business model in the agricultural industry.

We want to revolutionize the industry and improve life in the community, improving daily life and creating respect and love for food and flowers. This goal ties all units together. Of course, we can't achieve it alone. As always, we will work with our customers and stakeholders, continuing to feel, grow and connect to the future.



Group companies

Inochio Holdings Inc.

Group management, marketing, and R&D

Representative

Isao Ishiguro

Address

95, Kitashinkiri, Mukokusama-cho, Toyohashi-shi, Aichi, 441-8142, JP

TEL

+81 532-48-5711

Inochio Agri Inc.

Greenhouse business, management support, agriculture systems and material.

Representative

Nobuo Ishiguro

Address

95, Kitashinkiri, Mukokusama-cho, Toyohashi-shi, Aichi, 441-8142, JP

TEL

+81 532-48-4511

Inochio Logistics Inc.

Transportation of construction and agricultural material

Representative

Akio Yamamoto

Address

17, Otsubo, Kanbe-cho, Tahara-shi, Aichi, 441-3415, JP

TEL

+81 531-22-0880

Enomoto Nouzai Co.,Ltd.

Greenhouse, agrochemicals and materials sales

Representative

Fumihiro Ogawa

Address

49-3, Kamiiso, Ono-cho, Ibi-gun, Gifu, 501-0531, JP

TEL

+81 585-34-3590

Haleruto Inc.

Production and sales of produce and seedlings, import of seedlings

Representative

Nobuo Ishiguro

Address

95, Kitashinkiri, Mukokusama-cho, Toyohashi-shi, Aichi, 441-8142, JP

Email

info@haleruto.com

Inochio Plantcare Inc.

Agrochemicals, smart agriculture, crop care

Representative

Shoichi Murakami

Address

146, Wakamatsu, Wakamatsu-cho, Toyohashi-shi, Aichi, 441-8123, JP

TEL

+81 532-25-5611

Land Science Co., Ltd.

Agrochemicals, agriculture material, seedling sales

Representative

Toru Asanuma

Address

2864-10, Ryomitsuyanagi, Yonago, Tottori, 683-0853, JP

TEL

+81 859-34-1211

Inochio Seikoen Inc.

Breeding and sales of chrysanthemums and roses

Representative

Kohei Ishiguro

Address

531-8, Ukai-cho, Fuchu-shi, Hiroshima, 726-0002, JP

TEL

+81 847-40-0201

Inochio Flora Inc.

Chrysanthemum breeding and sales

Representative

Kohei Ishiguro

Address

10410-2, Nagata, Sera-cho, Sera-gun, Hiroshima, 729-6716, JP

TEL

+81 847-39-1300

Inochio Fujiplants Inc.

Breeding and sales of carnation

Representative

Kohei Ishiguro

Address

1-309, Chikubu Shinden, Isshiki-cho Ikuta, Nishio, Aichi, 444-0412, JP

TEL

+81 563-73-6881

Inochio Suzuki Young Plants Inc.

Carnation breeding

Representative

Kohei Ishiguro

Address

1-309, Chikubu Shinden, Isshiki-cho Ikuta, Nishio, Aichi, 444-0412, JP

TEL

+81 563-72-3112

Floritec

Breeding of chrysanthemum and celosia

Representative

Jeroen Ravensbergen

Address

Van Hemessenkade 7, 2481 BG Woubrugge, Holland

TEL

+31 172 518 963

Inochio Mirai Inc.

Production and sales of farm products, management training

Representative

Hiroaki Okado

Address

95, Kitashinkiri, Mukokusama-cho, Toyohashi-shi, Aichi, 441-8142, JP

TEL

+81 532-32-0117

Inochio Nogei Inc.

Production and sales of produce and seedlings, import of seedlings

Representative

Tomoo Furuhashi

Address

269, Kurogawabara, Okubo-cho, Tahara-shi, Aichi, 441-3426, JP

TEL

+81 531-23-0201

Inochio K.P Lao Co., Ltd.

Production and sales of agricultural goods

Representative

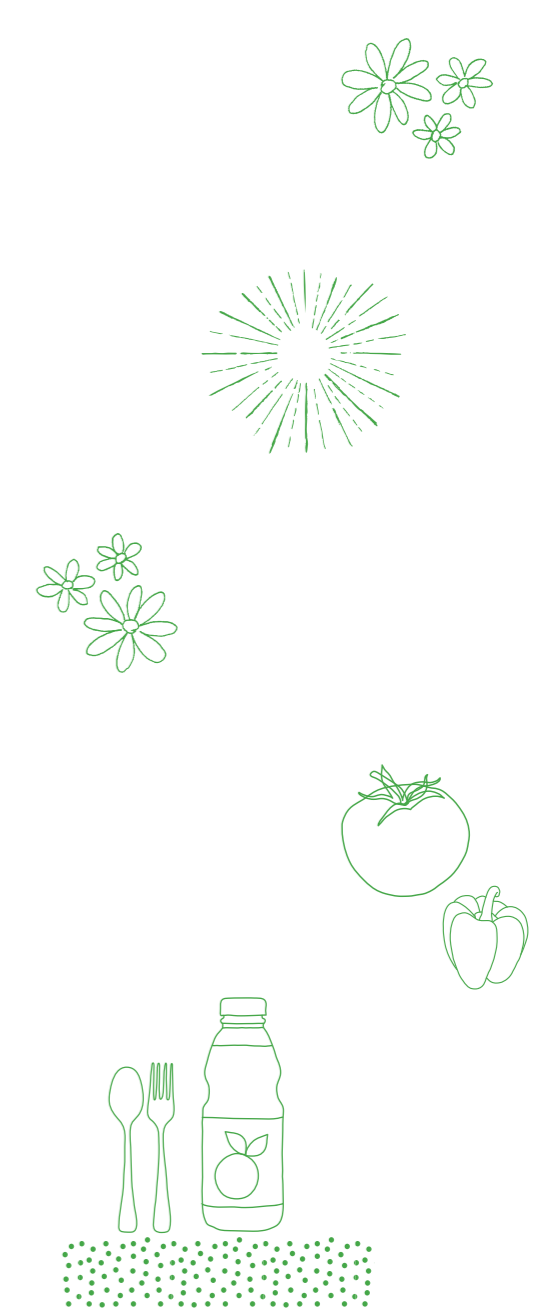
Koichi Hayashi

Address

Kamkok Village, Thateng, Sekong, Lao PDR

TEL

+856 (0) 30 456 7713



History

1909 Ishiguro Pharmacy is established in Tahara city, Aichi prefecture.

1917 Ishiguro Seiyakusho opens.

1921 Manufacturing and sales of pesticides begin.

1937 Manufacturing process of nicotine sulfate developed.

1950 Ishiguro Seiyakusho established. ^{*current Inochio Plantcare.}

1970 Ishiguro Nouzai established. ^{*current Inochio Agri.}

1971 Ishiguro Sogo Transport established. ^{*current Inochio Logistics.}

1991 Ishiguro Nogei established. ^{*current Inochio Nogei.}

1998 Kaneko Kouki of Saitama prefecture acquired. (Later renamed Ishiguro Nouzai Kanto.)

Ishiguro Pharmaceutical's retail department is established as Ishigrowing.

2003 Ecothanks established.

2008 Seikoen of Hiroshima prefecture acquired. ^{*current Inochio Seikoen.}

Flora Sera established ^{*current Inochio Flora.}

2009 Kamura Nouyaku of Shizuoka prefecture acquired.

2012 Yamagata Nichibeni and Himawari acquired.

2015 Ishigrowing Inc. merges into Dual Balance Inc.

Inochio Mirai, Inochio Capital, and Inochio Holdings established.

Company name changed to Inochio Group.

2016 Kamura Nouyaku and Ecothanks merge into Inochio Plantcare.

Dual Balance's farming and food department becomes Inochio Tsunagu.

Inochio acquires Nihon Nouji.

2017 Yamagata Nichibeni and Himawari merge into Inochio Tohoku.

Inochio Agricultural Central Research Center is established.

2018 Kawai Hiryo joins Inochio Group.

Advanced Agriculture of Laos joins Inochio Group.

2019 Inochio Tohoku and Nihon Nouji merge into Inochio Plantcare.

Floritec Holding B.V. of Holland joins Inochio Group.

2019 Inochio Fujiplants, Inochio Suzuki Young plants are established.

Inochio acquires Fuji-plants CO., LTD.'s carnation breeding division.

2020 Land Science Co., Ltd. joins Inochio group.

Business alliance with Dutch greenhouse supplier, Bosman Van Zaal.

2021 Inochio Tsunagu merges into Inochio Holdings and Inochio Mirai.

2022 Enomoto Nouzai Co.,Ltd. joins Inochio group.

Haleruto Inc. joins Inochio group.

2023 Kawai Hiryo Inc. merges into Inochio Plantcare.

About inochio

A visual guide of our figures



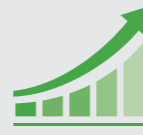
Since **1909**

Established in 1909, we have more than 100 years of experience in the field.



17 group companies

We are comprised of 18 companies, with 2 international locations.



36 billion yen of sales

We have been steadily growing in sales year by year



Female **41.5%** / Male **58.5%***

Maintaining a comfortable workplace for all employees is our top priority.



Average age of employees **42.1***

The right balance is maintained from young to experienced workers.

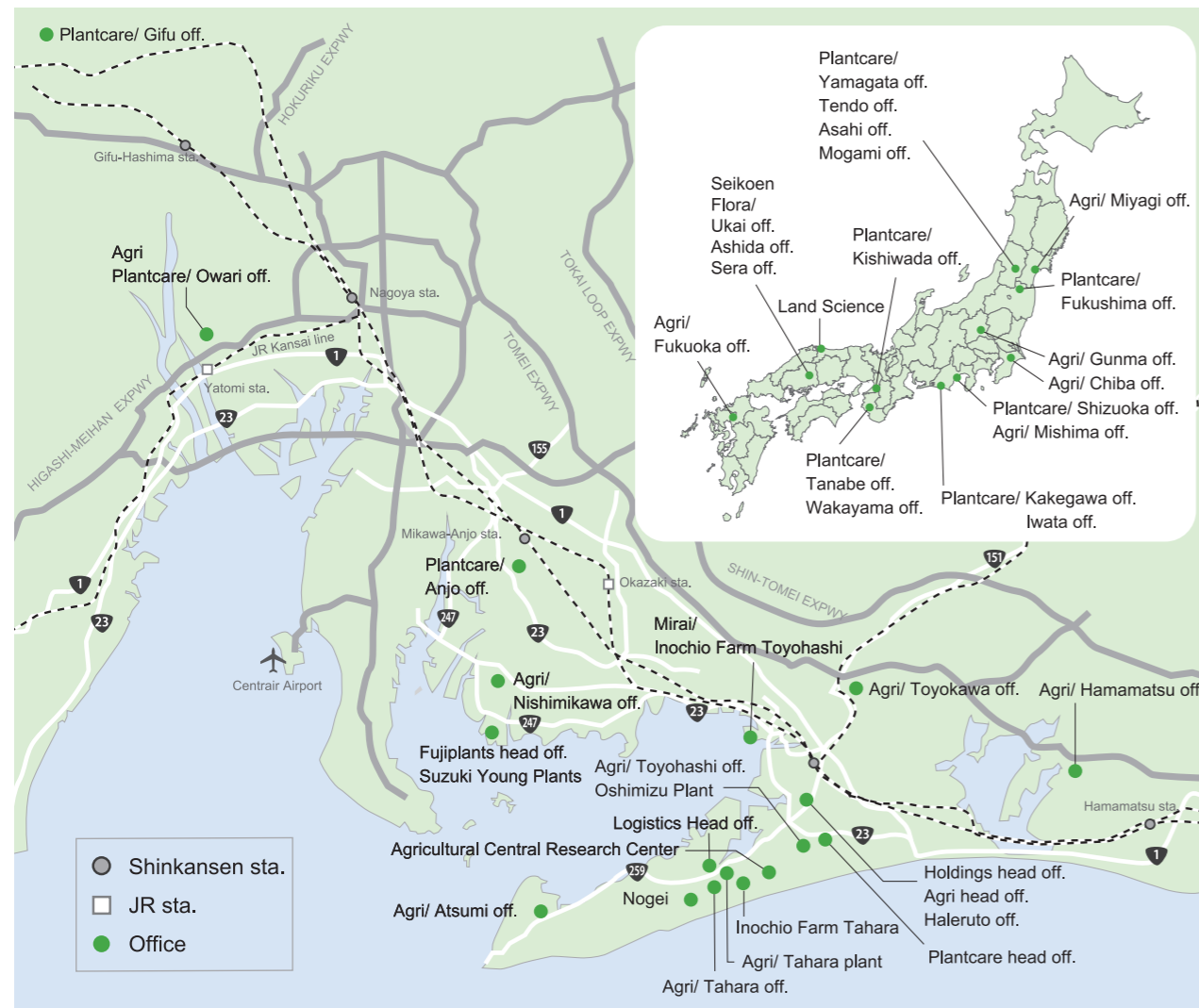


876 employees

A large number of employees help us support agriculture.

*as of May 2024

Office Locations



inochio
GROUP

Inochio Holdings Inc.

95 Kitashinkiri, Mukoukusamacho
Toyohashi, Aichi, 441-8142, Japan

TEL. +81-532-48-5711

<https://inochio.co.jp>